



Digital Video Recorder **DVR-321PRH**



Surveillance Video System

Wi-Corp DVR turns network cameras and video servers into a full-blown security system, all from your desktop PC. Now it's simple to not only view all of your cameras from one centralized application, but you can also record and play back video from your PC's hard drive.

Wi-Corp DVR-321PRH are currently being used in the following applications:

- Law Enforcement
- Military
- Emergency
- Public
- Commercial
- Transportation
- Aviation
- Healthy
- Education & Universities

Digital Hard Drive Recording

Gone are the days of VCR's for security recording. All cameras recorded with the Wi-Corp DVR software are saved to a video on your PC's hard drive.

Advantages of hard disk recording:

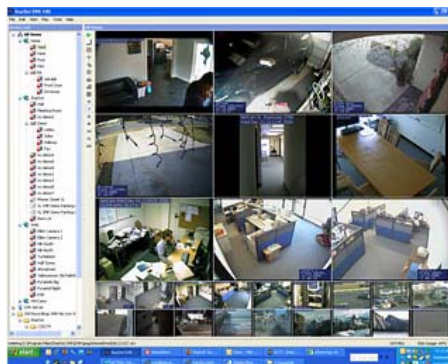
- Instant search and playback of video
- Older recordings are automatically deleted as hard disk becomes full.
- Using motion detect mode, weeks to month of video can be stored on a typical hard disk.
- Export to AVI video for CD-ROM archiving.
- Playback video forward or backward up 1000x normal speed.
- Record and play backup to 16 (or 100) cameras at the same time.

Simple yet Powerful

Wi-Corp was designed with both the novice and expert user in mind. Advanced security features such as motion detection and movie export are built-in and require no complicated setup menus to configure.

With Wi-Corp DVR-321PRH, you can:

- Easily record and playback video from Wi-Corp network cameras and video servers as well as many third party network cameras and video servers.
- Setup all advanced features from a handful of simple intuitive menus.
- Monitor, record and playback 16 cameras (local and remote) from one application.



DVR-321PRH

Why record an empty room.

Sophisticated motion detection is built in to Wi-Corp DVR. This means you can store significantly more video on your hard disk, but more importantly you don't waste time on playback watching an empty room. Only motion-detected frames are stored.

Advantages of motion detection:

- Only video or images that matter are stored
- Significantly less hard disk space is used.
- Saves 25-100 times the data as non-motion mode.



Across the board compatibility

Wi-Corp DVR can be used to view, record and playback video or images from the entire line of Wi-Corp products, including Wi-Corp Surveillance Video Server and IP network cameras.

With Wi-Corp DVR, you can also:

- Simultaneously record from both IP cameras and video server.
- Record up to sixteen remote cameras (multiple locations) from one central location
- Start with as little as one or two cameras now and add more later
- Record up to 2048x1536 resolution (IP cameras).
- View/record many third party network cameras and video servers including AXIS, Panasonic, Toshiba, Sony, JVC and many others.

Hardware Highlights

- 3.4 Ghz Processor
- RAM DDR2 2 GB
- HDD 1.2 TB SATA2
- 2 PCI / 2 PCI Xpress
- Video Card Nvidia GeForce 256 MB PCI Xpress
- Ethernet Gigabit 10/100/1000
- Windows XP Preinstalled w/licensed
- IBM Brand
- Monitor (Optional)
- Sound Card (Optional)



DVR-321PRH